

Weller®



WSD 81i

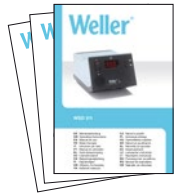


海洋儀器

致力于电子测试、维护领域!

GB Operating Instructions





&
WSP 80
KH 18
T0053294699



&
WSP 80
WDH 10
T0053297699



&
WP 65
WDH 10
T0053296699



Silver Line



WP 80



WSP 80



MPR 80

Power Response



WP 65



WMP

Standard Line



LR 21



WTA 50



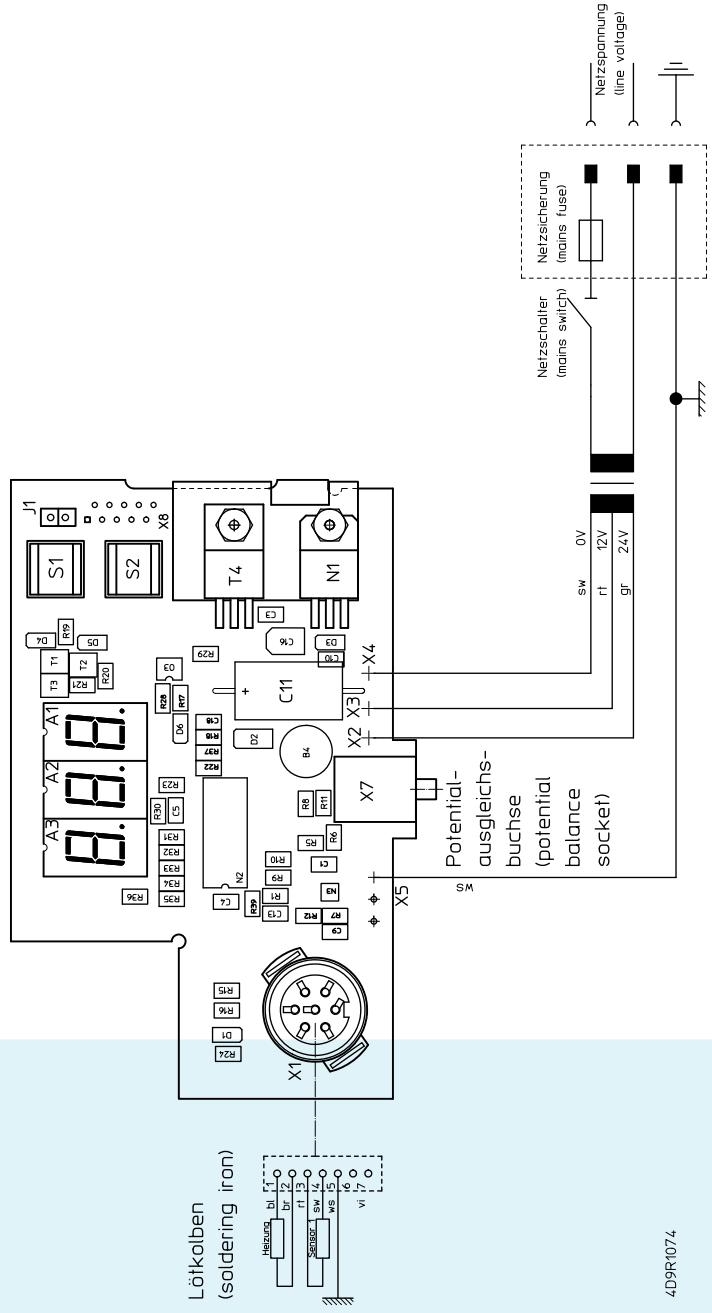
WST 82 Kit



WHP 80



WSB 80

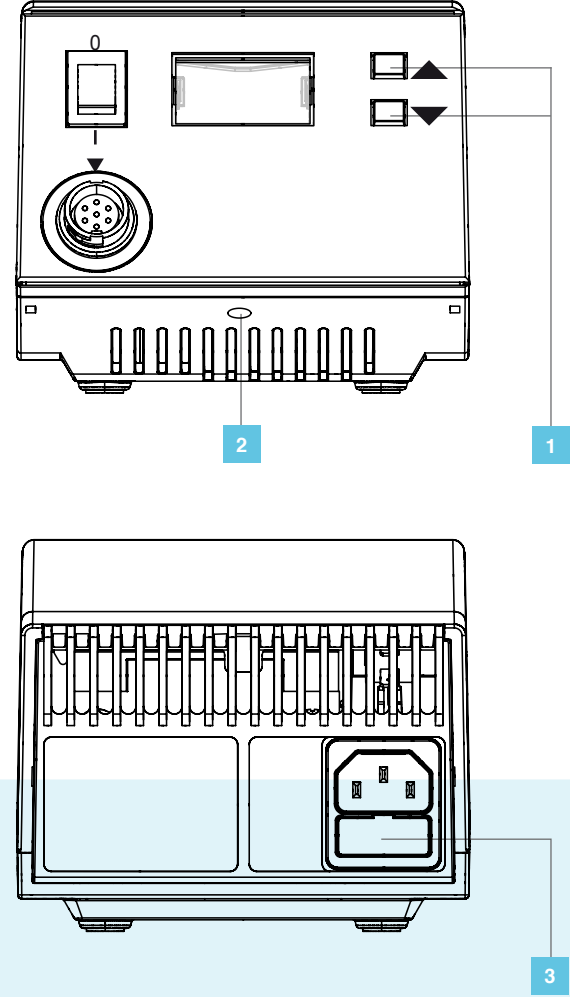


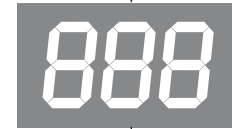
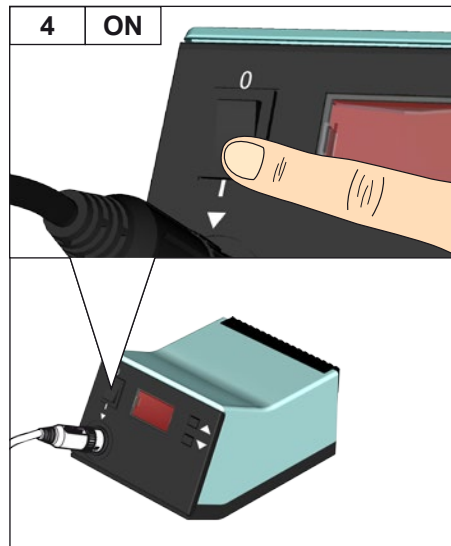
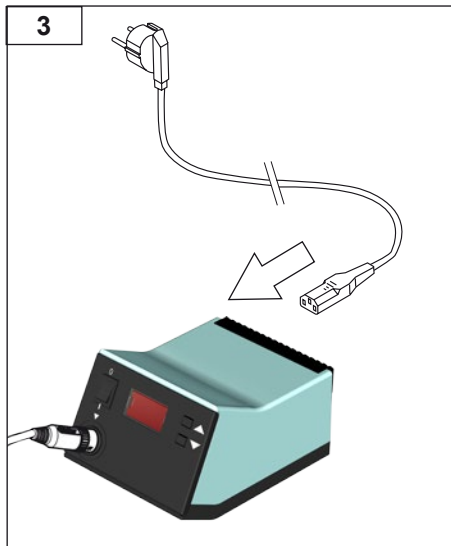
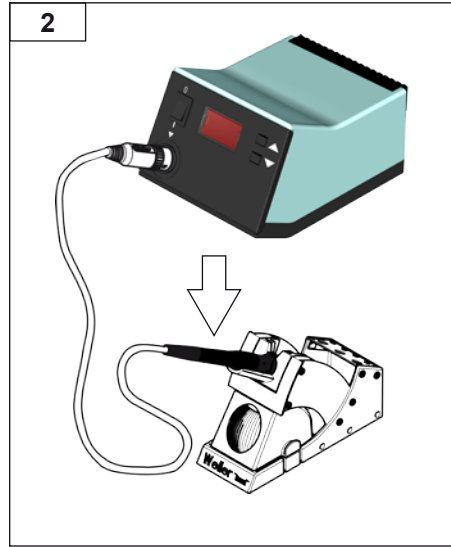
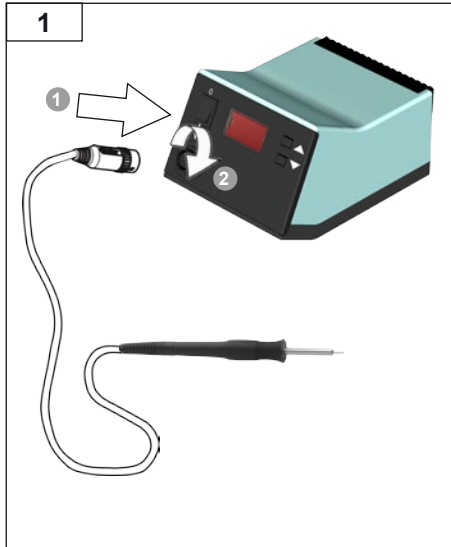
4D9R1074

4D9R1074
17.12.13 / Mar-Bei

WSD 81i

- 1 UP/DOWN keys
- 2 Equipotential bonding
- 3 Mains fuse





GB Start screen



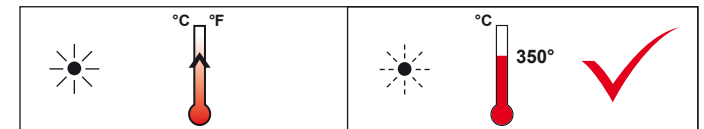
GB Nominal temperature

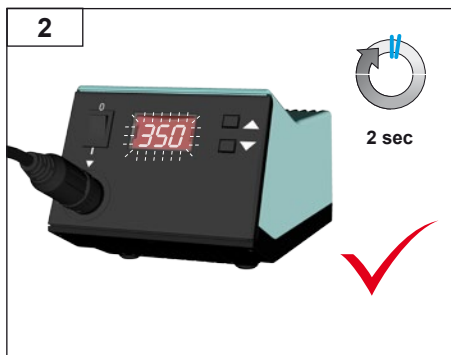
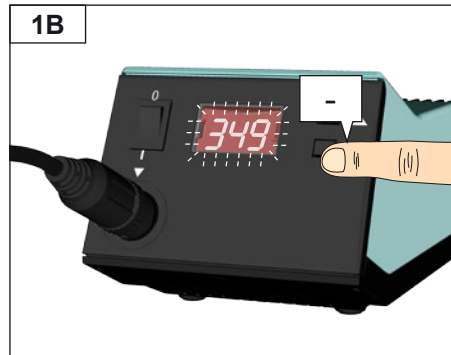
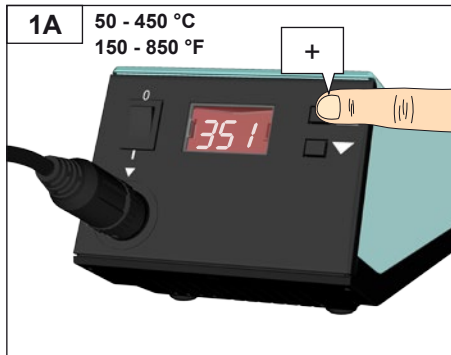


GB Temperature version °C/°F



GB Actual temperature





2 sec



4 sec



6 sec



8 sec



10 sec



12 sec



Menu navigation

Standby time (temperature deactivation)

Reducing the set nominal temperature to 150°C (300°F) (Standby).
 The setback time after which the soldering station switches to Standby mode can be set to between 0 and 99 minutes (0=OFF). The setback state is indicated by a flashing actual value display and is cancelled by pushing a button. The set value is briefly displayed. The „Auto off“ function is activated after three times the setback time. The soldering tool is switched off (flashing bar on display).

Offset (temperature offset)

The actual soldering-tip temperature can be adapted by entering a temperature offset around ± 40 °C (± 72 °F).

Temperature version °C/°F (temperature units)

Switching the temperature display temperature unit from °C to °F and vice versa.

Password (lock function)

Locking the nominal temperature. It is not possible to change settings on the soldering station after the temperature has been locked. Locking/ unlocking the soldering station: enter the code (1-999) using the UP/DOWN buttons. To confirm, push the UP/DOWN buttons simultaneously for 3 sec.

If you lose your access code, please contact Weller's Customer Service. (technical-service@weller-tools.com)

Temperature window (WINDOW)

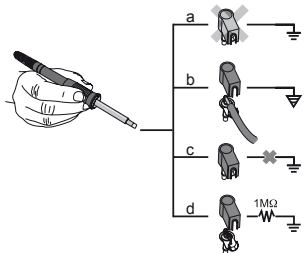
Limiting the temperature range to max. ± 99 °C (178 °F) based on a temperature locked using the „LOCK“ function.
 The locked temperature therefore represents the middle of the adjustable temperature range.

factory setting

Resetting all setting values to 0, temperature 350°C / 660°F. To confirm, push the UP/DOWN buttons simultaneously for 3 sec.

Soldering station	WSD 81i
Dimensions L x W x H	166 x 115 x 101 mm (6.54 x 4.53 x 3.98 inch)
Mains supply voltage	230 V ~ 50/60 Hz 240/120 V ~ 50/60 Hz 120 V ~ 60 Hz 100V ~ 50/60 Hz
Power consumption	95 W
Safety class	I, antistatic housing III, Soldering tool
Fuse	T500 mA (230 V / 50/60 Hz) T1,0 A (120V / 60 Hz) T1,25 A (100 V / 50/60 Hz)
Temperature range	50 - 450 °C 150 - 850 °F
Temperature accuracy	± 2%
Equipotential bonding	Via 3.5 mm pawl socket on back of unit (delivery form: hard grounded without jack plug)

Equipotential bonding



Four variants are possible by connecting the 3.5 mm jack socket differently:

a	Hard-grounded	supplied without plug.
b	Equipotential bonding	with plug, equaliser at centre contact.
c	Floating	with plug
d	Soft-grounded	with plug and soldered resistor. Grounded through selected resistor.

Warranty

Claims by the buyer for physical defects are time-barred after a period of one year from delivery to the buyer. This does not apply to claims by the buyer for indemnification in accordance with §§ 478, 479 BGB (German Federal Law Gazette).

We shall only be liable for claims arising from a warranty furnished by us if the quality or durability warranty has been furnished by use in writing and using the term „Warranty“.

The warranty shall be void if damage is due to improper use and if the device has been tampered with by unauthorised persons.

Subject to technical alterations and amendments.

Operating instructions are available for download at www.weller-tools.com.

For your safety

Thank you for the confidence you have shown in buying this device.

The device has been manufactured in accordance with the most rigorous quality standards which ensure that it operates perfectly.

These instructions contain important information which will help you to start up, operate and service the device safely and correctly as well as to eliminate simple faults and malfunctions yourselves.

Read these instructions and the accompanying safety information carefully before starting up the device and starting work with the device.

Keep these instructions in a place that is accessible to all users.

Warning!



Electric shock and risk of burns

Connecting the control unit incorrectly poses a risk of injury due to electric shock and can damage the device. Risk of burns from the soldering tool while the control unit is operating.

- Carefully read the attached safety information, the safety information accompanying these operating instructions as well as the operating instructions for your control unit before putting the control unit into operation and observe the safety precautions specified therein.
- Always place the soldering tool in the safety rest while not in use.

The device has been manufactured in accordance with state-of-the-art technology and acknowledged regulations concerning safety. There is nevertheless the risk of personal injury and damage to property if you fail to observe the safety information set out in the accompanying booklet and the warnings given in these instructions. Always pass on the device to third parties together with these operating instructions.

Specified Conditions Of Use

Use the soldering station only for the purpose of soldering, as specified in the Operating Instructions. Intended use of the soldering station/ desoldering station also includes the requirement that you

- adhere to these instructions,
- observe all other accompanying documents,
- comply with national accident prevention guidelines applicable at the place of use.

The manufacturer will not be liable for unauthorised modifications to the device.

Applied directives

This device conforms to the specifications of the EC Declaration of Conformity with Directives 2004/108/EC, 2006/95/EC and 2011/65/EU (RoHS).



Disposal

Do not dispose of electric tools together with household waste material! In observance of European Directive 2012/19/EU on waste electrical and electronic equipment and its implementation in accordance with national law, electric tools that have reached the end of their life must be collected separately and returned to an environmentally compatible recycling facility.

Starting up the device

Note

Please adhere to the operating instructions of the connected devices.

Put the tool into operation as described in the chapter „Placing into operation“.
Check to see if the mains voltage matches the ratings on the name-plate.
Make sure the machine is switched off before plugging in.

Soldering and desoldering

Caution!

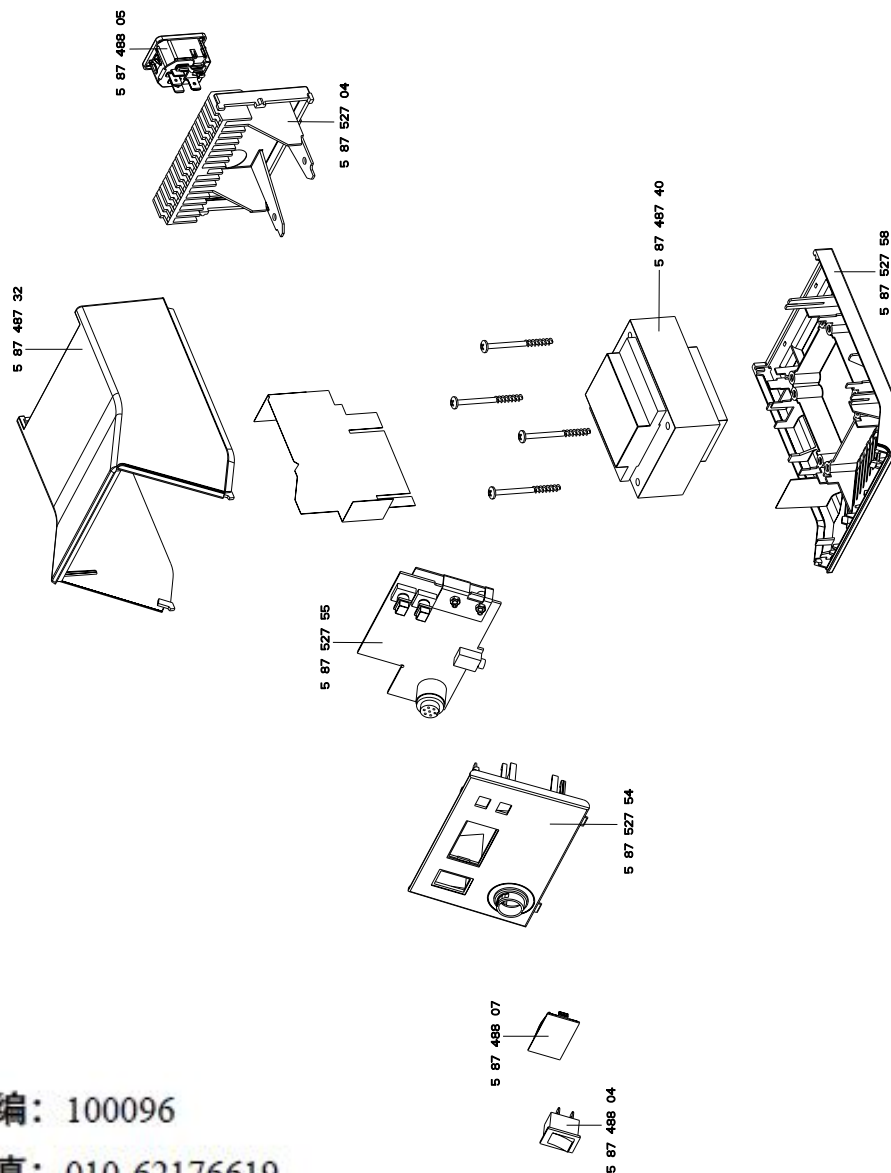
Always make sure that the soldering tips are fitted properly.


The control units have been adapted to hold a medium-sized soldering tip. Discrepancies may occur if the tip is changed or a different shaped tip is used.

Carry out soldering work as directed in the operating instructions of your connected soldering tool.

Handling the soldering tips

- Coat the selective and tinnable soldering tip with solder when heating it up for the first time. This removes oxide coatings which have formed during storage and impurities from the soldering tip.
- Make sure that the soldering tip is well coated with solder during breaks between soldering work and prior to storage of the device.
- Do not use aggressive fluxing agents.
- Always make sure that the soldering tips are fitted properly.
- Select as low a working temperature as possible.
- Select the largest possible soldering tip shape for the application. Rule of thumb: the soldering tip should be roughly as large as the soldering pad.
- Coat the soldering tip well with solder to ensure that there is efficient heat transfer between the soldering tip and the soldering area.
- Prior to extended breaks between soldering work, switch off the soldering system or use the Weller function to reduce the temperature when the soldering equipment is not in use.
- Coat the tip with solder prior to storage if you do not intend to use the soldering iron for an extended period of time.
- Apply solder directly to the soldering area, not to the soldering tip.
- Change the soldering tips using the designated tool.
- Do not apply mechanical force to the soldering tip.



 北京海洋兴业科技股份有限公司

北京市西三旗东黄平路 19 号龙旗广场 4 号楼(E座)906 室

电 话: 010-62176775 62178811 62176785

企业 QQ: 800057747

企业官网: www.hyxyyq.com

邮编: 100096

传真: 010-62176619

邮箱: info.oi@oitek.com.cn

购线网: www.gooxian.net