

# R&S®NRPM

## Antenna Modules

### Technical Information



1436286102

The Technical Information describes the following R&S®NRPM models and options:

- R&S® NRPM-A90 1426.7760.01
- R&S® NRPM-A90D 1426.7777.01

© 2020 Rohde & Schwarz GmbH & Co. KG

Muehldorfstr. 15, 81671 Munich, Germany

Phone: +49 89 41 29 - 0

Fax: +49 89 41 29 12 164

E-mail: [info@rohde-schwarz.com](mailto:info@rohde-schwarz.com)

Internet: <http://www.rohde-schwarz.com>

Subject to change – Data without tolerance limits is not binding.

R&S® is a registered trademark of Rohde & Schwarz GmbH & Co. KG.

Trade names are trademarks of the owners.

1436.2861.02 | Version 01 | R&S®NRPM

Throughout this manual, products from Rohde & Schwarz are indicated without the ® symbol, e.g. R&S®NRPM is indicated as R&S NRPM.

# Contents

<b>1 Spare Parts and recommended Tools.....</b>	<b>4</b>
<b>2 Cable Replacement.....</b>	<b>5</b>



® **北京海洋兴业科技股份有限公司** (证券代码: 839145)

北京市西三旗东黄平路19号龙旗广场4号楼 (E座) 906室

电话: 010-62176775 62178811 62176785

企业QQ: 800057747 维修QQ: 508005118

企业官网: [www.hyxyyq.com](http://www.hyxyyq.com)

邮编: 100096

传真: 010-62176619

邮箱: [market@oitek.com.cn](mailto:market@oitek.com.cn)

购线网: [www.gooxian.com](http://www.gooxian.com)



扫描二维码关注我们

查找微信公众号: 海洋仪器

# 1 Spare Parts and recommended Tools

The available cable replacement kits are listed in the table that follows:

Description	Part No.	Applicable for modules	
		A90	A90D
Cable Replacement Kit, 550 mm	1436.2855.02	yes	yes
Cable Replacement Kit, 750 mm	1436.2855.03	yes	yes
Cable Replacement Kit, 1000 mm	1436.2855.04	yes	yes
Cable Replacement Kit, 1500 mm	1436.2855.05	yes	yes

The recommended tools are listed in the table that follows:

Description	Part No.
Screwdriver, flat tip Blade width 3 mm max.	Commercial off the shelf  Example: WERA Werk Hermann Werner GmbH & Co. KG 160 i VDE Insulated screwdriver for slotted screws Part No. 05006100001 <a href="http://www.wera.de">www.wera.de</a>
Cable tie tool (Force: 50 N ± 5 N)	Commercial off the shelf  Example: PANDUIT® GS2B Tension Part No. GSB2 <a href="http://www.panduit.com">www.panduit.com</a>
Electronics side cutter	Commercial off the shelf  Example: KNIPEX-Werk C. Gustav Putsch KG Electronic Super Knips® Part No. 78 71 125 <a href="http://www.knipex.com">www.knipex.com</a>

## 2 Cable Replacement

### NOTICE

There are two versions of the strain relief.

The old version is shown on the left hand side of the figures.

The new version is shown on the right hand side of the figures.

### NOTICE

The procedure of cable replacement is shown for the single variant of the strain relief.

The procedure is also applicable for the dual variant of the strain relief.

To change the antenna cable, proceed as follows:

1. Remove the cable tie (1). See [Figure 2-1: Removing cable tie](#).  
Use the electronics side cutter (part no. 78 71 125 or equivalent).

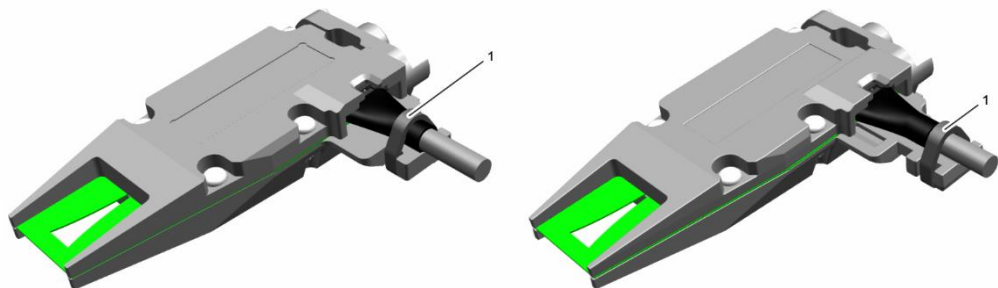


Figure 2-1: Removing cable tie

2. Hold the locking lug down to unlock the cable. See [Figure 2-2: Unlocking cable](#).  
Use the flat tip screwdriver (part no. 05006100001 or equivalent).

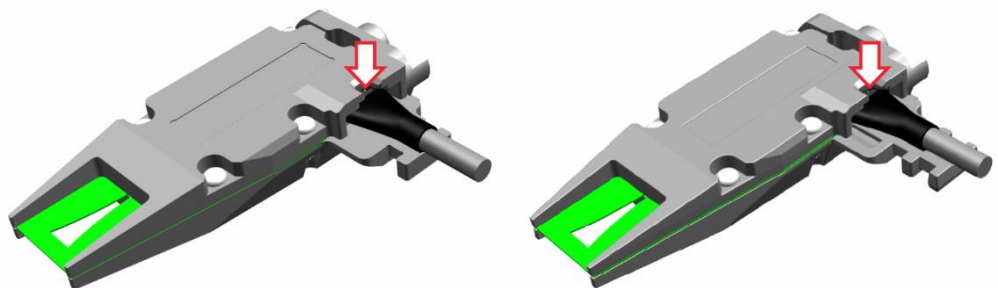


Figure 2-2: Unlocking cable

3. While you hold down the locking lug, remove the cable. See [Figure 2-3: Removing cable](#).

**NOTICE!** Remove the cable in a linear movement to prevent damage.

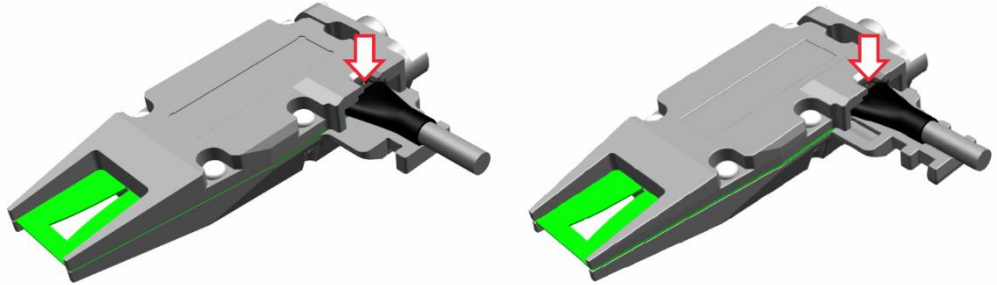


Figure 2-3: Removing cable

4. Place the new cable in the notch. See [Figure 2-4: Placing the new cable](#).

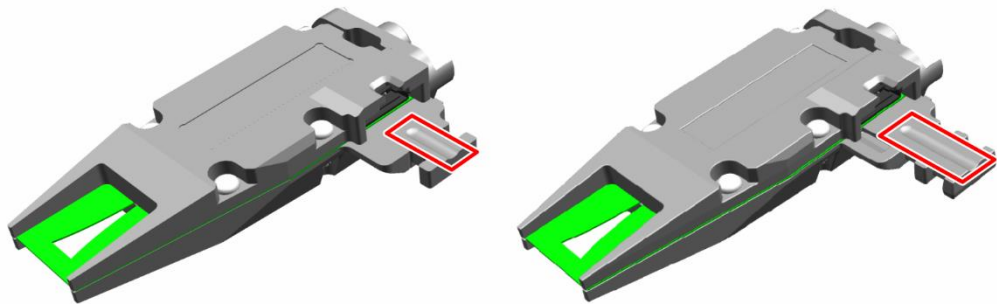


Figure 2-4: Placing the new cable

5. Connect the new cable until it snaps in. See [Figure 2-5: Connect new cable](#).

**NOTICE!**

Connect the new cable in a linear movement to prevent damage.

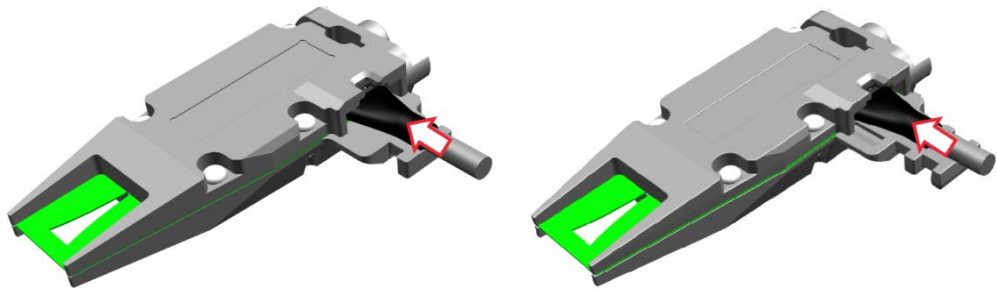


Figure 2-5: Connect new cable

- Place the cable tie.  
Use the notch to place the cable tie correctly. See [Figure 2-6: Placing a cable tie](#).

**NOTICE!**

Monitor the position of the cable tie head. See [Figure 2-7: Position of cable tie](#).

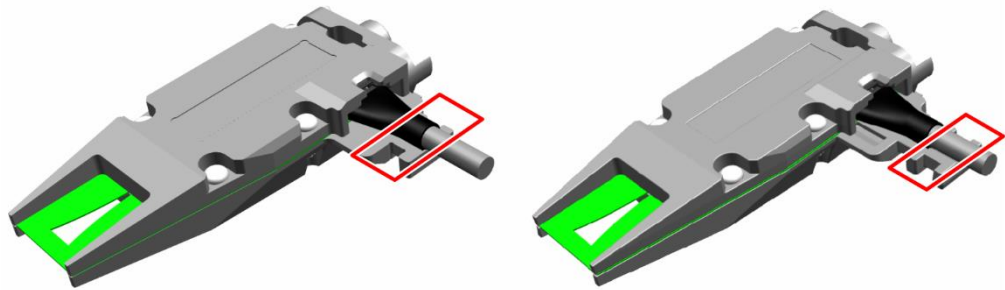


Figure 2-6: Placing a cable tie

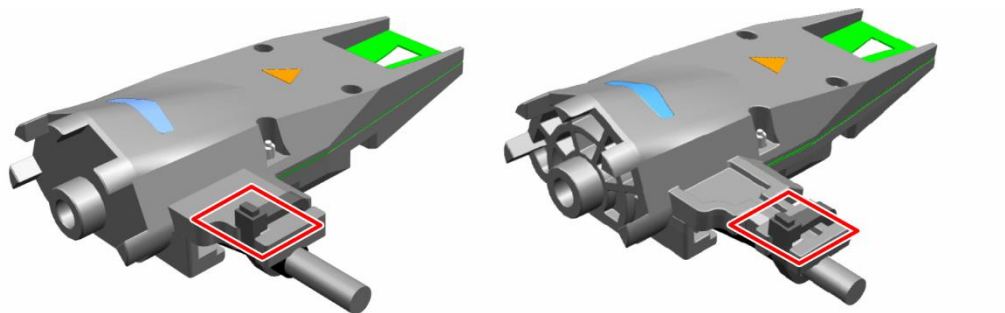


Figure 2-7: Position of cable tie head

- Fasten the cable tie.  
Use the cable tie tool (part no. GSB2 or equivalent). Set the force of the cable tie tool to  $50\text{ N} \pm 5\text{ N}$ .

**NOTICE!**

Make sure that the force of the automatic cable tie gun is set correctly to prevent cable damage.

Make sure that the cable is free of load. The cable and the connector can be damaged.

- Cut off the excessing cable tie.  
Use the electronics side cutter (part no. 78 71 125 or equivalent).